

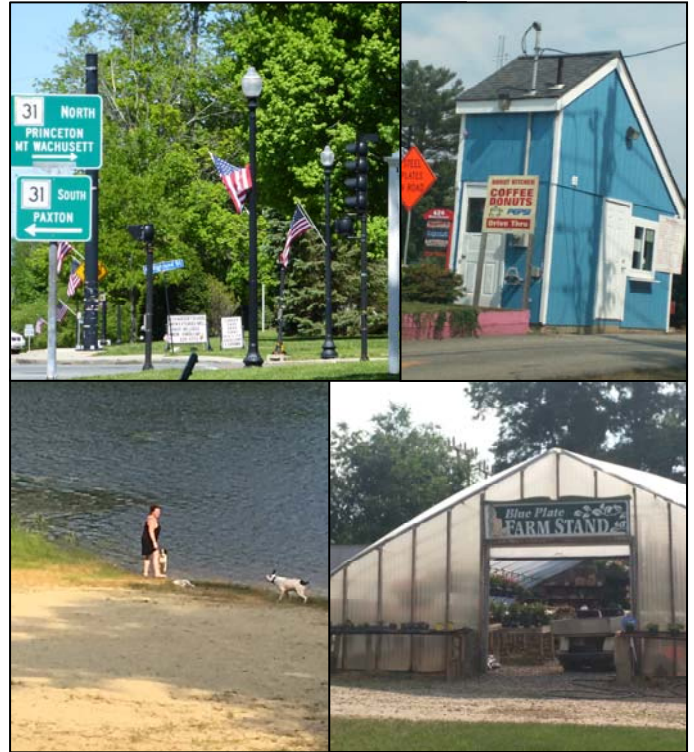


Land Use

Zoning

Ten zoning districts:

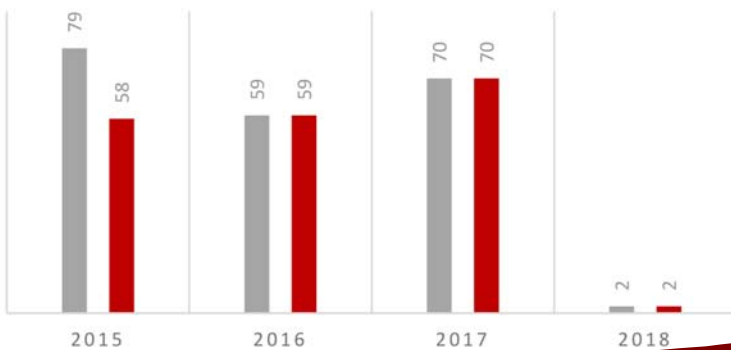
- Business Office-Professional (BO-P)
- Commercial (C)
- Industrial (I)
- Industrial-Quarry (I-Q)
- Residential - Rural (R-40)
- Residential - Suburban 1 (R-1) through 3 (R-10)
- Residential - Multi-Family (R-M)
- Village District (V)



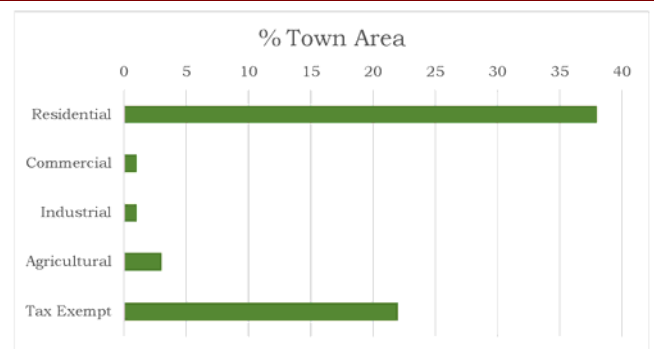
Single Family Dwelling Building Permits 2007-2015

BUILDING PERMITS

■ Total Permits ■ Single Family Permits



Percent of Land Use (2005)



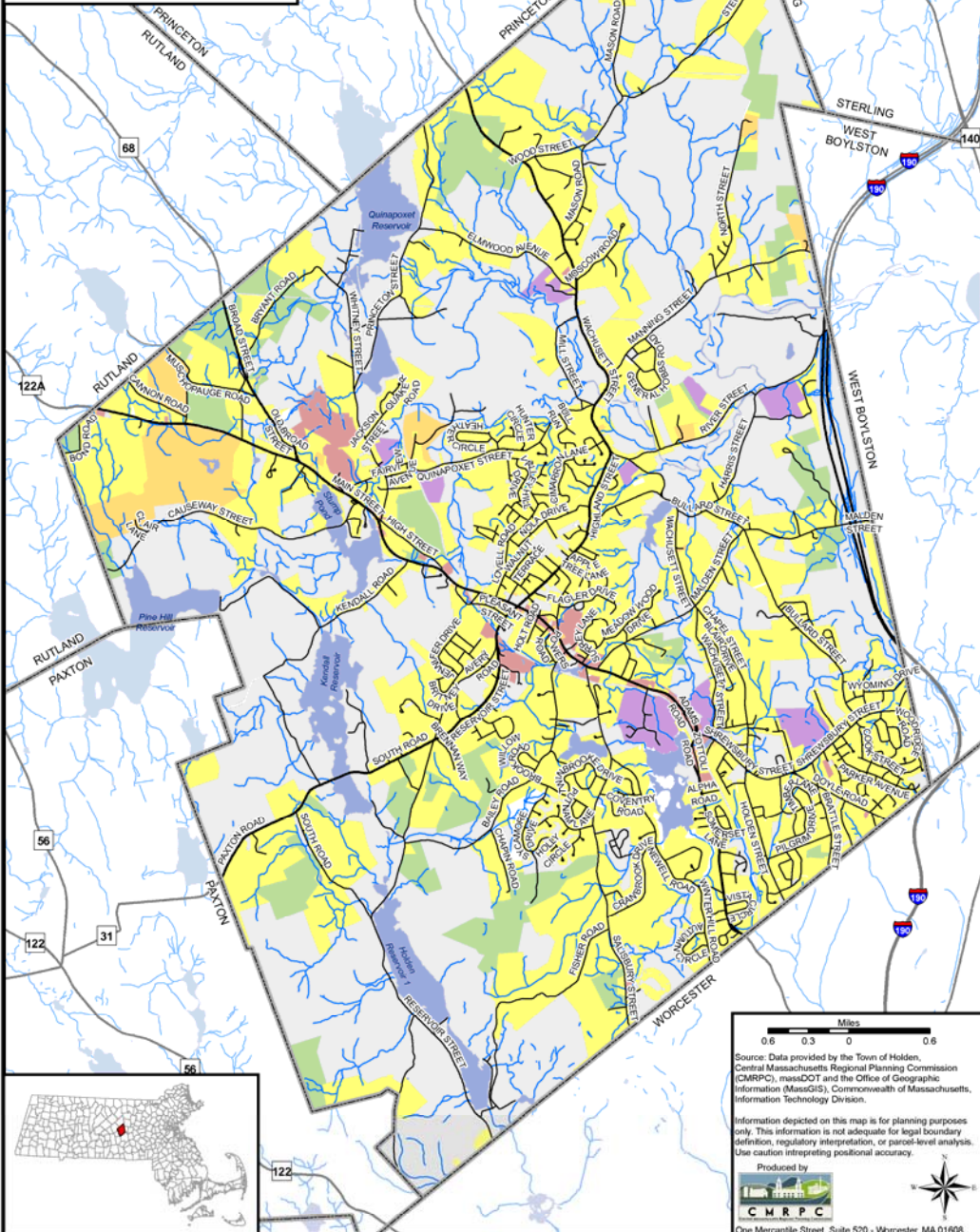
FOR MORE INFORMATION:

www.holdenmasterplan.com

Town of Holden Master Plan Committee

Land Use Map 2019 MASTER PLAN

Legend	
	Town Boundary
	Water Bodies
	Streams
	Major Road
	Local Road
	Multiple Use
	Residential
	Commercial
	Industrial
	Chapter Land
	Exempt Land



Miles
0.6 0.3 0

Source: Data provided by the Town of Holden, Central Massachusetts Regional Planning Commission (CMRPC), massDOT and the Office of Geographic Information (MassGIS), Commonwealth of Massachusetts, Information Technology Division.

Information depicted on this map is for planning purposes only. This information is not adequate for legal boundary definition, regulatory interpretation, or parcel-level analysis. Use caution interpreting positional accuracy.

Produced by

 One Mercantile Street, Suite 520 - Worcester, MA 01608

Town of Holden, Massachusetts

CONSULTANT TEAM

Central Massachusetts Regional Planning Commission

2 Washington Square, Union Station (2nd Floor)

Worcester, MA, 01604 • www.cmrpc.org • (508) 756-7717

